



ENA2 Course Overview 2021

Welcome to Year 12 English Advanced. The following outline will give you an overview of the year and all the important information you need to know.

This course offers a challenging programme and fosters advanced skills which, ultimately, prepares you for Level 3 Scholarship. Your teacher will select a range of texts to engage your curiosity and encourage you to be creative in your assessments. Below are the standards on offer:

Internal Assessments:	2.4 Writing Portfolio 2.5 Oral Presentations (speech or other presentation) 2.9 Reading Responses	6 credits 3 credits 4 credits
External Assessments:	2.1 Written Text (exam essay on ONE studied text(s) – novel, poetry, short stories, play) 2.2 Visual Text (exam essay on studied film) 2.3 Unfamiliar Text (exam - read 3 unfamiliar texts and answer questions)	4 credits 4 credits 4 credits

University Entrance (UE) Literacy:

You **MUST** gain 'UE Literacy' by the end of Year 13 if you intend to go to university. To gain UE Literacy you need to gain **5 READING and 5 WRITING CREDITS**. There are a number of standards from a **range of subjects** that are tagged as either 'Reading', 'Writing' or both, that will count towards this total. Even if a standard is tagged as both, it can only count towards either the Reading OR Writing component. It is possible to gain UE Literacy solely from this course.

External Examinations:

It is an expectation, as a student in Advanced English, that you complete all three external papers, regardless of how many reading and writing credits you may obtain earlier. The Unfamiliar Text paper is incorporated to further develop these skills in preparation for Scholarship English.

Admission to Year 13 English:

Entrance into Year 13 courses is decided by your performance in Year 12 English. To gain confirmed entrance to Year 13 English (ENG3), you must gain a minimum of **16 credits offered in this English course**. An internal course is offered for students who achieve at least **14 credits** from this course. This course is UE approved but is an internal course that will not offer opportunity for endorsement. A UE Literacy focused course, is offered for those who do not meet these requirements, have not passed UE Literacy, but intend on studying 3 or more UE approved subjects in Year 13, and have intentions of further study. For any course, admission may also be at the discretion of the Head of English.



Assessment Policy and Information

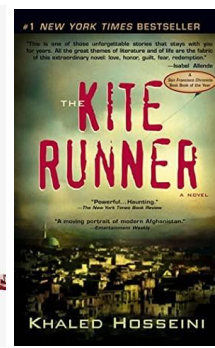
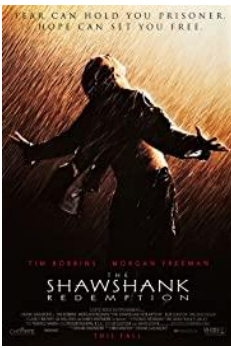
You need to ensure that you have a copy of, and thoroughly understand, the booklet ‘**Student Guidelines for National Assessment.**’ You can see Mrs Campion if you need further information.

Some key things you need to know:

- **Deadlines:** You will receive a copy of the year plan for this course the beginning of the year. In English, all deadlines will be by midnight on the due date stated – even if you do not have English that day! No matter how you submit your assessment, it must be in on time. Extensions must be applied for through the Assistant Principal, Mrs Campion, and approved *before* the assessment due date. If a deadline is not met, and no extension has been granted, then no credits can be awarded, and you will receive a ‘Not Achieved’ grade.
- **Further Assessment Opportunities:** There are **NO Further Assessment Opportunities** for all standards in this course. For this reason, it is **VITAL** that you make the most of every learning opportunity, and that you keep to the milestone checks for feedback, as well as meeting final deadlines for assessments.
- **Resubmissions:** Should you receive a Not Achieved grade but be close to passing you **may** be offered a **resubmission** opportunity, where you are given a brief, finite period of time to address the slight issues in your work. You are only offered if you are capable of discovering and correcting the errors yourself. Your teacher will indicate on your marksheet if you qualify for a resubmission.
- **Authenticity:** It is vital that you ensure all work that you submit for assessment is your own. Failure to do this will result in automatic loss of credits. Plagiarism – or submitting someone else’s work as your own – can occur in several ways, for instance:
 - Copying someone else’s work – this will also lose credits for the student whose work you copied.
 - Copying from the internet without using a referencing system.
 - Claiming a teacher’s notes as your own.

When you hand your work in, your teacher must be confident that all work is yours. For this reason, they will ask you to **meet key checkpoints** and sometimes to work on some aspects in class. *Failure to produce work at checkpoints or to leave work in class, when requested, may bring into question authenticity, which could result in you receiving no credits.* Breaches of the authenticity rules, plagiarism or cheating will be referred to the Head of Faculty for investigation.

- **Grade appeals:** If you wish to seek reconsideration of your grades then you may appeal within 14 days. You will need to speak to your subject teacher first. If the issue is unable to be resolved, you will need to see the Head of English, Mrs Porton, to complete an appeal form.



Year Planner 2021: ENA2

Term 1	Week 1	Week 2	Week 3	Week 4	Week 5	Week 6	Week 7	Week 8	Week 9	Week 10	Week 11
Week Dates	1-5 Feb	8-12 Feb	15-19 Feb	22-26 Feb	1-5 Mar	8-12 Mar	9- 13 Mar	22-26 Mar	29 Mar-2 Apr	5-9 Apr	12-16 Apr
UNIT		Intro Activities	Literature 1 Study					2.4 Writing Portfolio			
Assessment		Introduce 2.9			2.9 #1 due			Practice Essay due	2.9 #2 Due		Piece 1 #1
School Activities	M - Anniversary Day T- Y12/13 Course Confirmation W - Year 9 Th - House Day F - Full School	M - Waitangi Day (observed)	M/T - Y13 Camp W - Swimming Sports (TBC) Th/F - Y10-13 Photos	T - Athletics Th - Back up Athletics		Th - Sports Photos	W - Sports Photos	Summer Tournament Week	F - Easter Friday	M - Easter Monday T - Easter Tuesday	

Term 2	Week 1	Week 2	Week 3	Week 4	Week 5	Week 6	Week 7	Week 8	Week 9	Week 10
Week Dates	3-7 May	10-14 May	17-21 May	24-28 May	31 May-4 Jun	7-11 Jun	14-18 Jun	21-25 Jun	28 Jun - 2 Jul	5-9 Jul
UNIT	Writing Portfolio	Literature 2 Study					2.5 Speeches			
Assessment	Piece 1 #2 due	2.9 #3 Due			Piece 1 #3 due		Practice Essay due			Present Speeches
School Activities	Th - Cross Country		W - TOD (Accord)			M - Queen's Birthday	F- TOD (Kadua & Kapa)		F - TOD	

Term 3	Week 1	Week 2	Week 3	Week 4	Week 5	Week 6	Week 7	Week 8	Week 9	Week 10
Week Dates	26-30 Jul	2-6 Aug	9-13 Aug	16-20 Aug	23-27 Aug	30 Aug-3 Sep	6-10 Sep	13-17 Sep	20-24 Sep	27 Sep-1 Oct
UNIT	2.4 Writing Portfolio			2.3 Unfamiliar Text		Revision	Assessment Week		Writing Portfolio	
Assessment	2.9 #4 & #5 due	Piece 2 #1 due			Piece 2 #2 due		2.9 #6 due			Final Submissions
School Activities		F - TOD	Th - TOD (Accord)	W/Th - Sports/Cultural Photos		Tournament Week		Th/F- Assess Week starts	Assess week	

Term 4	Week 1	Week 2	Week 3	Week 4	Week 5	Week 6	Week 7	Week 8	Week 9
Week Dates	18-22 Oct	25-29 Oct	1-5 Nov	8-12 Nov	15-19 Nov	22-26 Nov	29 Nov-3 Dec	6-10 Dec	13-17 Dec
UNIT	Revision								
Assessment									
School Activities		M - Labour Day			NCEA Exams start				M,T/W - Jnr Camps Th - Jnr Prizegiving