

OUR CORE PURPOSE

To develop fine young people who can navigate easily and competently into life beyond school.

VISION

Our students will have a sense of purpose and direction: they will understand who they are and where they are going.

OUR CORE NAVIGATOR STRATEGY

CHS is committed to developing an innovative approach whereby the school, students, staff, parents, and community, take ownership to achieve our core purpose together.

CULTURE

CHS is a high performing school based on a shared vision, operational efficiency, innovation, respect for each other, teamwork, achievement, and contributing to the community.

VALUES

Our school motto "Fortiter et Recte" (Courage to do the right thing) is based upon the core values of respect, responsibility and achievement.

THE CAMBRIDGE HIGH SCHOOL LEARNER WILL BE BOTH IN PERSON AND IN THE DIGITAL WORLD:

- An effective communicator.
- A problem solver.
- A good citizen.
- A creative and critical thinker.
- A resilient self-manager.
- An open minded, respectful individual and one who relates positively with others.

OUR NAVIGATOR STRATEGY

- Students will be guided and supported throughout their learning journey.
- Our focus will be on student outcomes that prepare them for the world beyond school.
- A strong emphasis will be placed on our core values.
- Maaori student outcomes will be valued and supported.

1. Managing school roll growth.
2. Developing student motivation and drive.
3. Understanding the changing skills for life and work.
4. Understand the changing needs of employers, ITOs, and tertiary providers.
5. Teaching the core competencies and soft skills.

Students have real choices based upon their personal interests, learning styles, talents and abilities.

- Achieving qualifications is one of the foundation steps for future success. CHS will continue to meet the goal of most of our leavers achieving at least NCEA Level 2.

- A new faculty based upon contextualised/project learning will be established. This will enhance engagement, achievement, and education-to-employment transitions.

- We will work with others to develop a 'navigator strategy' to implement the new core purpose and vision – this implies more of an outward focussed school which is better connected to the rapidly changing external environment.

- In addition to academic success, Maaori students will develop a good sense of hauora; a personal sense of wellbeing. This will be achieved by catering for all aspects of personal development: hinengaro (mind), wairua (spiritual), tinana (physical), and whaanau (social).

LEADING THE VALUES

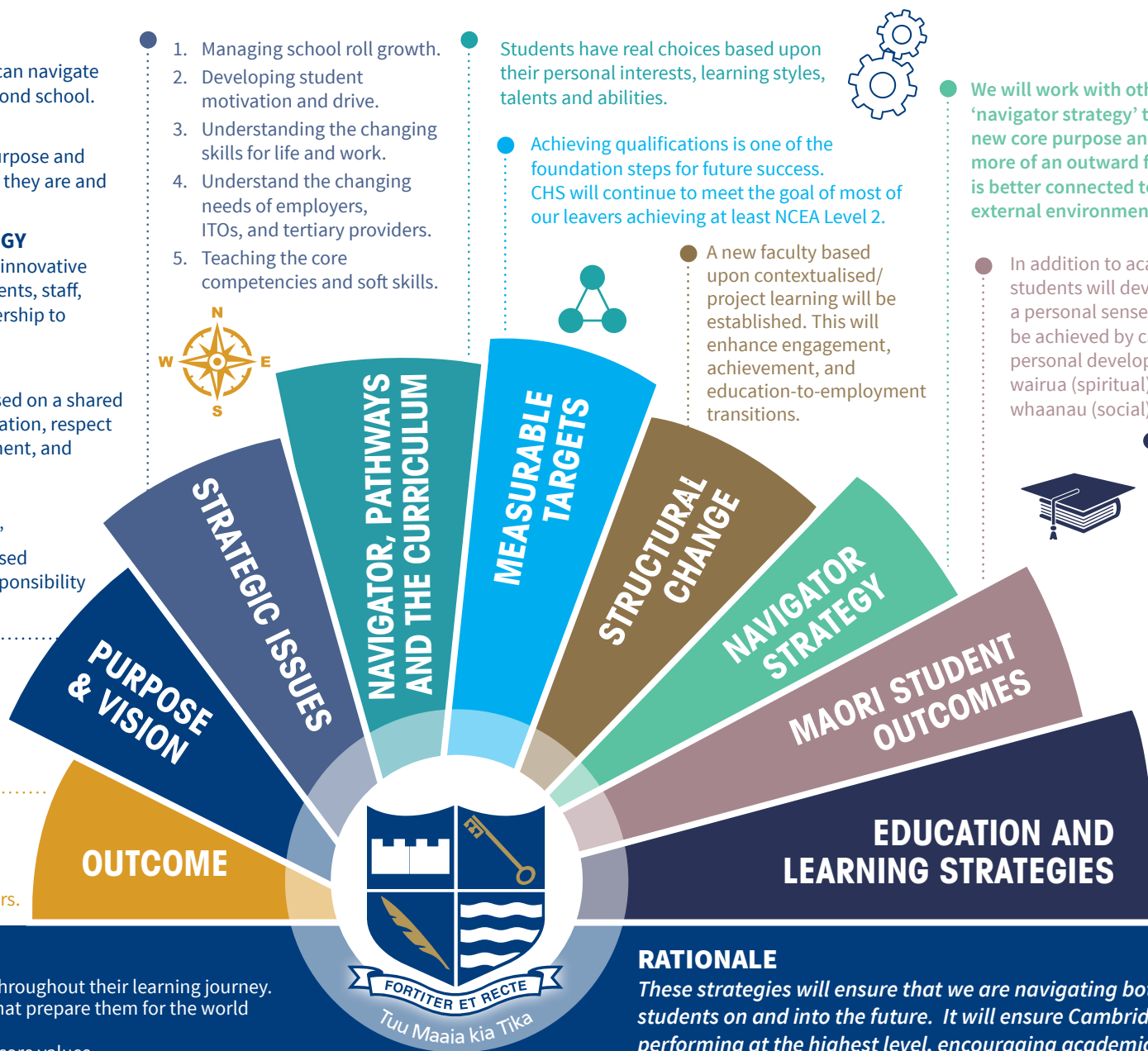
Establishing core values within the school inclusive of students, staff, form teachers and deans.

ACADEMIC/ CLASSROOM

Ensuring students are motivated, supported, valued and take responsibility for their own learning.

STRONG COMMUNITY RELATIONSHIPS

Working closely with key players to understand what we have to offer students for their future studies and employment.



RATIONALE

These strategies will ensure that we are navigating both our school and students on and into the future. It will ensure Cambridge High School is performing at the highest level, encouraging academic excellence while ensuring the school meets the needs of all students.